

HAND PUMPS

HPT12

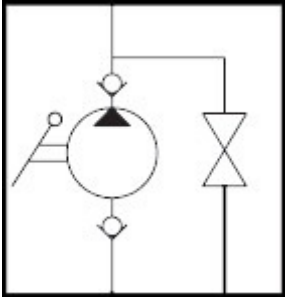


TYPE	FLOW (cc)	PRESSURE (bar)		WEIGHT (Kg)
		Exercise	Max	
HPT 12	12	320	380	3.0
CODE				MODEL
Without bellows	Picture	With bellows	Picture	
HPT12		HPT12S		Release handknob
HPT12V		HPT12VS		Release handknob + pressure relief valve
HPT12M		HPT12MS		Release manipulator
HPT12MV		HPT12MVS		Release manipulator + pressure relief valve
HPT12E		HPT12ES		Without release handknob
HPT12EV		HPT12EVS		Without release handknob + pressure relief valve

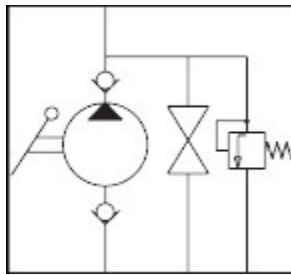
HPT12

HYDRAULIC LAYOUTS

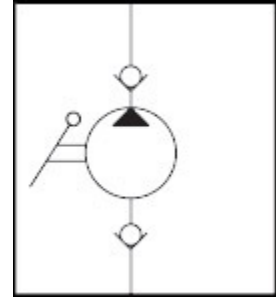
HPT12 - HPT12S



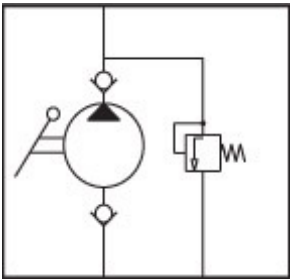
HPT12V - HPT12VS



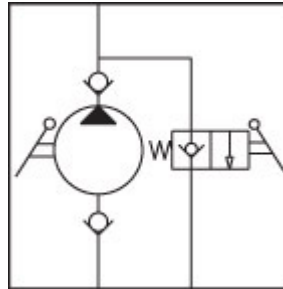
HPT12E - HPT12ES



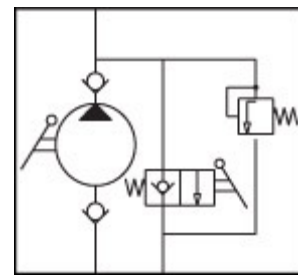
HPT12EV - HPT12EVS



HPT12M - HPT12MS



HPT12MV - HPT12MVS

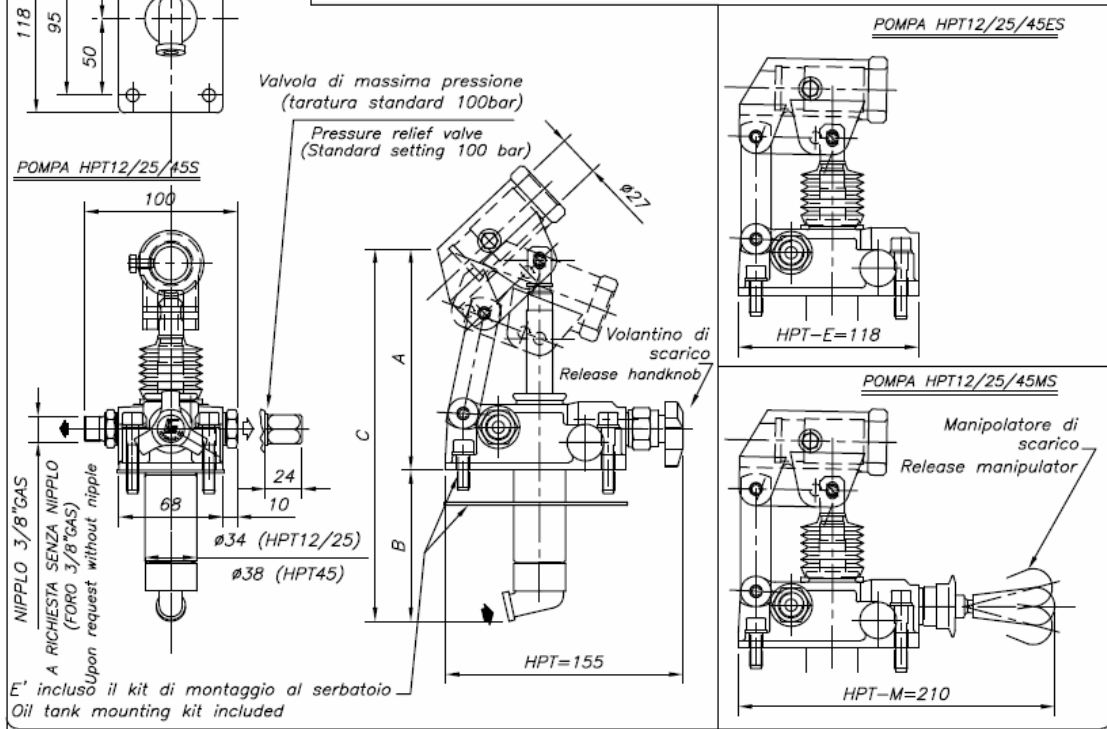
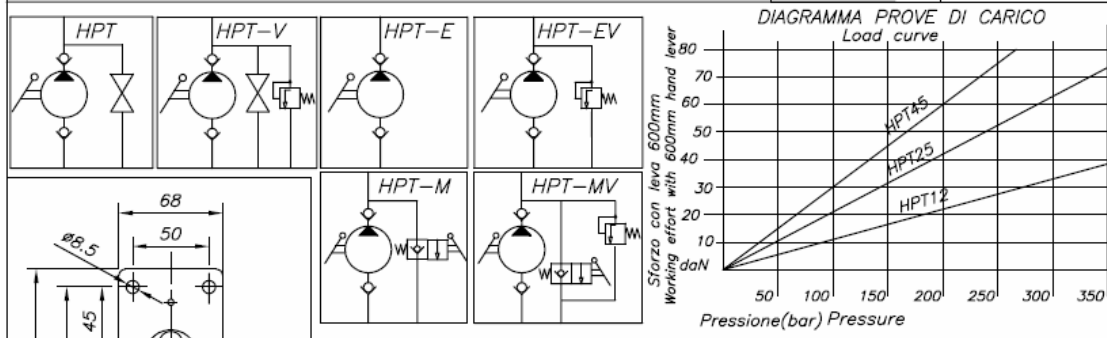


Hand Pumps HPT

Double acting function for a single acting cylinder
Flanged fixing for oil tank

POMPA TIPO Type	CILINDRATA (cc) Flow	Pressione(bar) Pressure		A	B	C	PESO (Kg) Weight
		Esercizio	Massima				
HPT12	12	320	380	145	85	230	3.0
HPT25	25	280	350	145	98	243	3.1
HPT45	45	220	280	148	105	253	3.2

VERSIONE	MODEL	CODICE Code	
		Senza soffiotto Without bellows	Con soffiotto With bellows
Volantino di scarico	Release handknob	HPT12/25/45	HPT12/25/45S
Volantino di scarico + Valv. max press.	Release handknob + Pressure relief valve	HPT12/25/45V	HPT12/25/45VS
Manipolatore di scarico	Release manipulator	HPT12/25/45M	HPT12/25/45MS
Manipolatore di scarico + Valv. max press.	Release manipulator + Pressure relief valve	HPT12/25/45MV	HPT12/25/45MVS
Senza comando scarico	Without release handknob	HPT12/25/45E	HPT12/25/45ES
Senza comando scarico + Valv. max press.	Without release handknob + Pressure relief valve	HPT12/25/45EV	HPT12/25/45EVS



HPT25

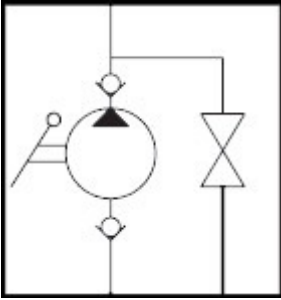


TYPE	FLOW(cc)	PRESSURE (bar)		WEIGHT (Kg)
		Exercise	Max	
HPT 25	25	280	350	3.1
CODE				MODEL
Without bellows		With bellows	Picture	
HPT25		HPT25S		Release handknob
HPT25V		HPT25VS		Release handknob + pressure relief valve
HPT25M		HPT25MS		Release manipulator
HPT25MV		HPT25MVS		Release manipulator + pressure relief valve
HPT25E		HPT25ES		Without release handknob
HPT25EV		HPT25EVS		Without release handknob + pressure relief valve

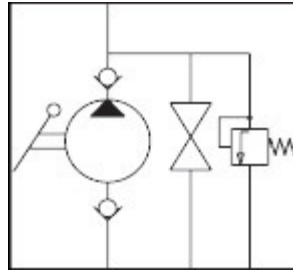
HPT25

HYDRAULIC LAYOUTS

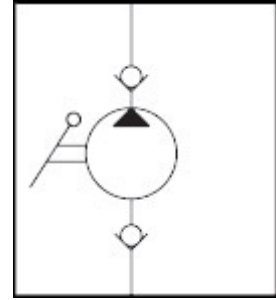
HPT25 - HPT25S



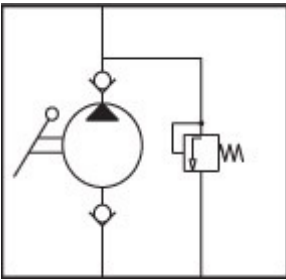
HPT25V - HPT25VS



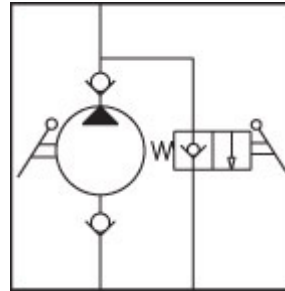
HPT25E - HPT25ES



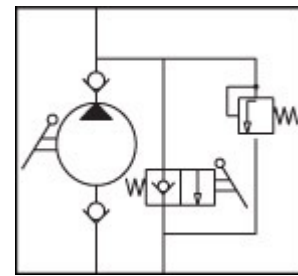
HPT25EV - HPT25EVS



HPT25M - HPT25MS



HPT25MV - HPT25MVS



HPT45

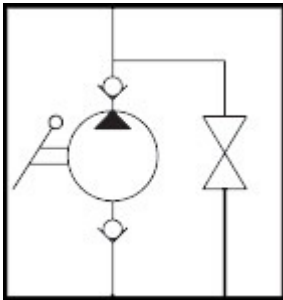


CODE				MODEL
Without bellows		With bellows	Picture	
HPT45		HPT45S		Release handknob
HPT45V		HPT45VS		Release handknob + pressure relief valve
HPT45M		HPT45MS		Release manipulator
HPT45MV		HPT45MVS		Release manipulator + pressure relief valve
HPT45E		HPT45ES		Without release handknob
HPT45EV		HPT45EVS		Without release handknob + pressure relief valve

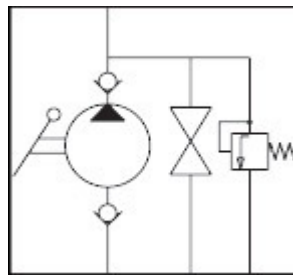
HPT45

HYDRAULIC LAYOUTS

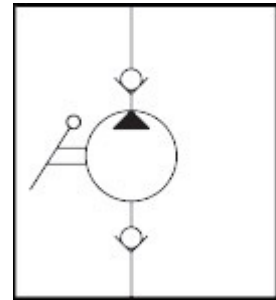
HPT45 - HPT45S



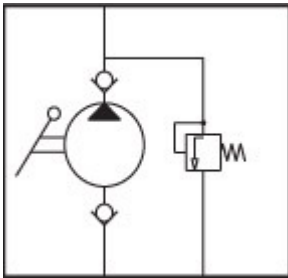
HPT45V - HPT45VS



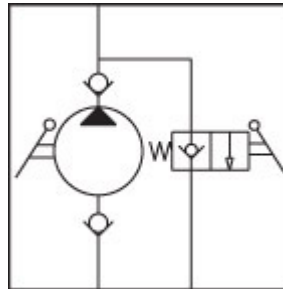
HPT45E - HPT45ES



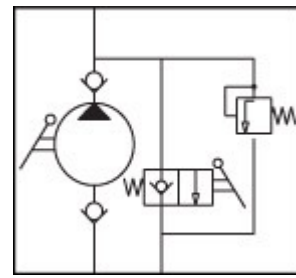
HPT45EV - HPT45EVS



HPT45M - HPT45MS



HPT45MV - HPT45MVS



HPTD12

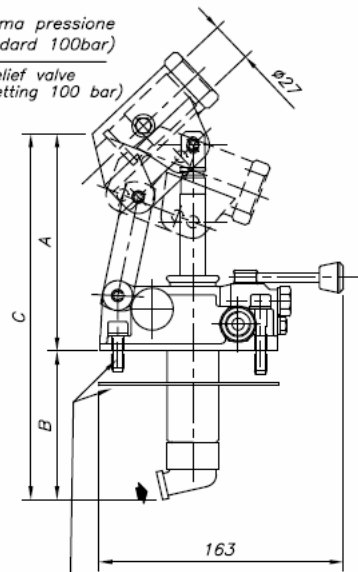
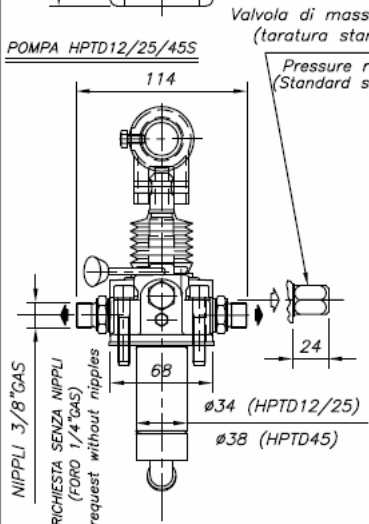
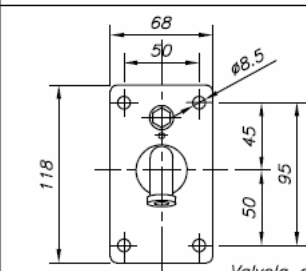
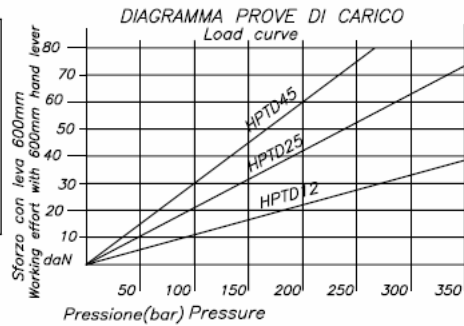
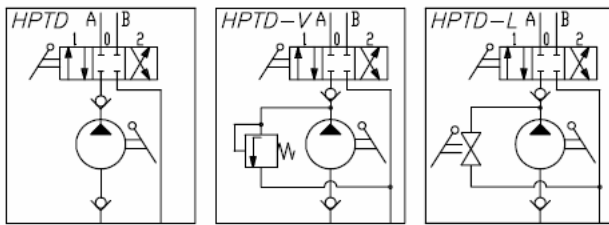


TYPE	FLOW (cc)	PRESSURE (bar)		WEIGHT (Kg)
		Exercise	Max	
HPTD12	12	320	380	3.0
CODE				MODEL
Without bellows	Picture	With bellows	Picture	
HPTD12		HPTD12S		4/3 diverter
HPTD12V		HPTD12VS		4/3 diverter + pressure relief valve
HPTD12L		HPTD12LS		4/3 diverter + release lever
HYDRAULIC LAYOUTS				
HPTD12 - HPTD12S		HPTD12V - HPTD12VS		HPTD12L - HPTD12LS

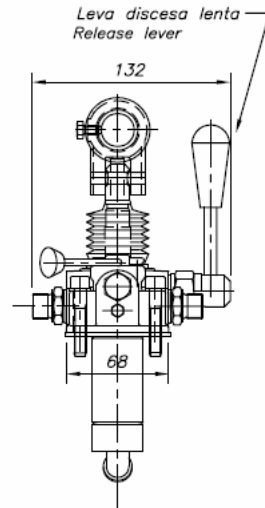
Hand Pumps HPTD 4/3 Diverter supplied for a double acting cylinder Flanged fixing for oil tank

POMPA TIPO Type	CILINDRATA (cc) Flow	Pressione(bar) Pressure		A	B	C	PESO (Kg) Weight
		Esercizio	Massima				
HPTD12	12	320	380	145	85	230	3.0
HPTD25	25	280	350	145	98	243	3.1
HPTD45	45	220	280	148	105	253	3.2

VERSIONE	MODEL	CODICE Code	
		Senza soffiello Without bellows	Con soffiello With bellows
Distributore 4/3	4/3 diverter	HPTD12/25/45	HPTD12/25/45S
Distributore 4/3 + Valv. max press.	4/3 diverter + Pressure relief valve	HPTD12/25/45V	HPTD12/25/45VS
Distributore 4/3 + Leva discesa lenta	4/3 diverter + Release lever	HPTD12/25/45L	HPTD12/25/45LS



POMPA HPTD12/25/45LS



E' incluso il kit di montaggio al serbatoio
Oil tank mounting kit included

HPTD25






TYPE	FLOW(cc)	PRESSURE (bar)		WEIGHT (Kg)	
		Exercise	Max		
HPTD25	25	280	350	3.1	
CODE					
				MODEL	
Without bellows	Picture	With bellows	Picture		
HPTD25		HPTD25S		4/3 diverter	
HPTD25V		HPTD25VS		4/3 diverter + pressure relief valve	
HPTD25L		HPTD25LS		4/3 diverter + release lever	
HYDRAULIC LAYOUTS					
HPTD25 - HPTD25S		HPTD25V - HPTD25VS		HPTD25L - HPTD25LS	

HPTD45

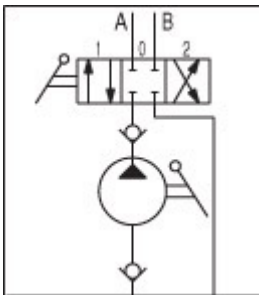


TYPE	FLOW (cc)	PRESSURE (bar)		WEIGHT (Kg)
		Exercise	Max	
HPTD45	45	220	280	3.2

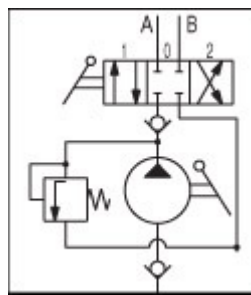
CODE				MODEL
Without bellows	Picture	With bellows	Picture	
HPTD45		HPTD45S		4/3 diverter
HPTD45V		HPTD45VS		4/3 diverter + pressure relief valve
HPTD45L		HPTD45LS		4/3 diverter + release lever

HYDRAULIC LAYOUTS

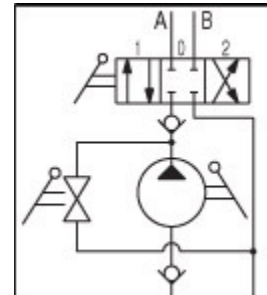
HPTD45 - HPTD45S



HPTD45V - HPTD45VS



HPTD45L - HPTD45LS



HP 20

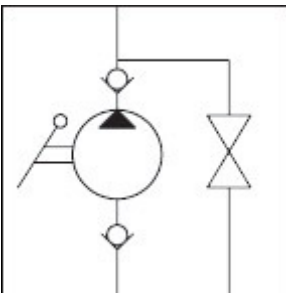


TYPE	FLOW (cc)	PRESSURE (bar)		WEIGHT (Kg)
		Exercise	Max	
HP 20	20	280	350	2.9

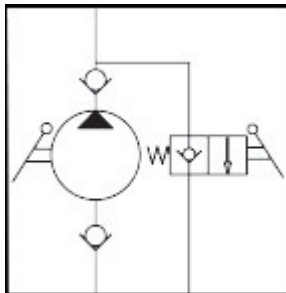
Without bellows	With bellows	MODEL
HP20	HP20S	Release handknob
HP20L	HP20LS	Release lever
HP20M	HP20MS	Release manipulator
HP20E	HP20ES	Without release handknob
HP20V	HP20VS	Pressure relief valve

HYDRAULIC LAYOUTS

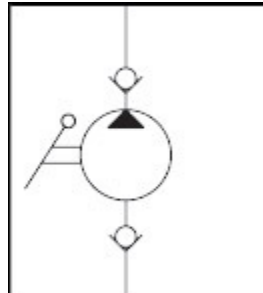
HP20 - HP20L
HP20S - HP20LS



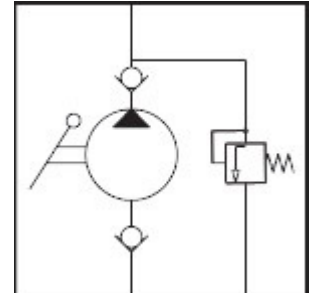
HP20M - HP20MS



HP20E - HP20ES



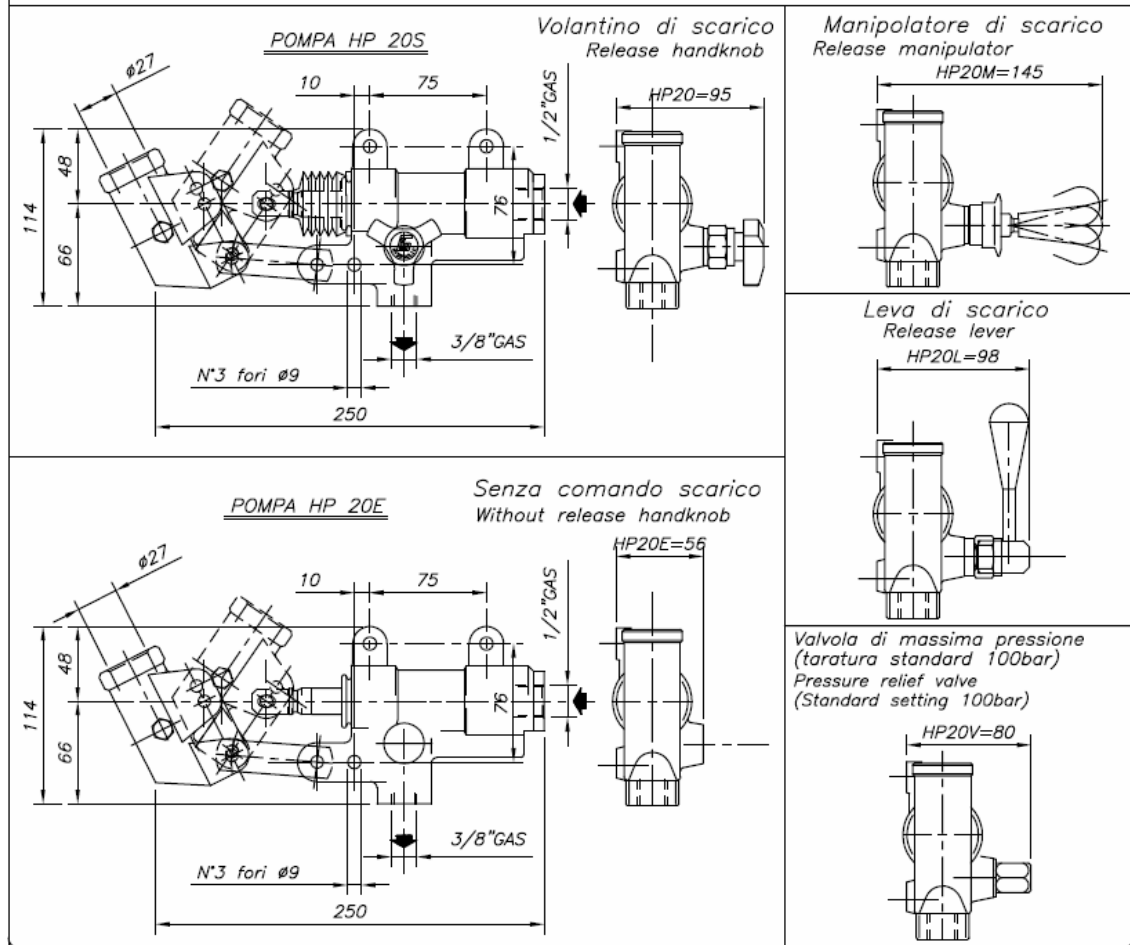
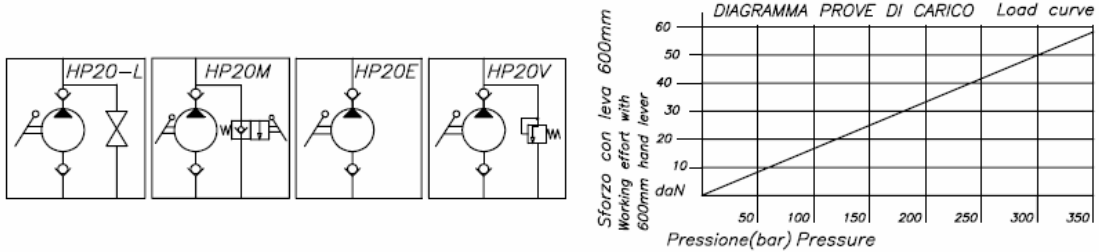
HP20V - HP20VS



Hand Pumps HP20

Double acting function for a single acting cylinder
Fixing to wall

POMPA TIPO Type	CILINDRATA (cc) Flow	PRESSIONE (bar) Pressure		PESO (Kg) Weight	
		Esercizio	Massima		
HP 20	20	280	350	2.9	
VERSIONE		Model		CODICE Code	
				Senza soffiotto Without bellows	Con soffiotto With bellows
Volantino di scarico		Release handknob		HP 20	HP 20S
Leva di scarico		Release lever		HP 20L	HP 20LS
Manipolatore di scarico		Release manipulator		HP 20M	HP 20MS
Senza comando scarico		Without release handknob		HP 20E	HP 20ES
Valvola di massima pressione		Pressure relief valve		HP 20V	HP 20VS



HP 50

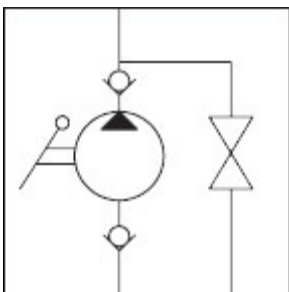


TYPE	FLOW (cc)	PRESSURE (bar)		WEIGHT (Kg)
		Exercise	Max	
HP 50	43	220	280	3.8

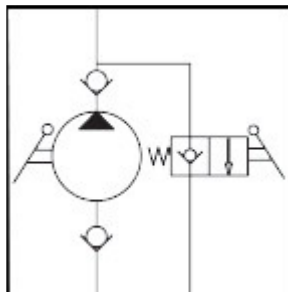
Without bellows	With bellows	MODEL
HP50	HP50S	Release handknob
HP50L	HP50LS	Release lever
HP50M	HP50MS	Release manipulator
HP50E	HP50ES	Without release handknob
HP50V	HP50VS	Pressure relief valve

HYDRAULIC LAYOUTS

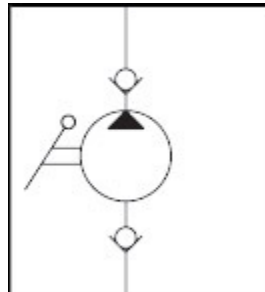
HP50 - HP50L
HP50S - HP50LS



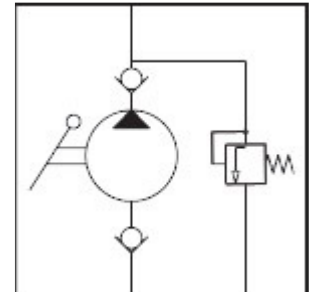
HP50M - HP50MS



HP50E - HP50ES



HP50V - HP50VS

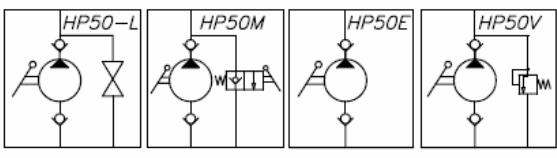


Hand Pumps HP50

Double acting function for a single acting cylinder

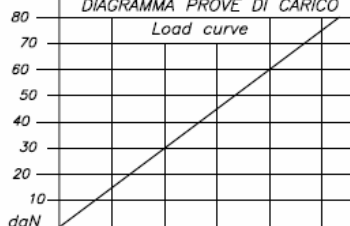
Fixing to wall

POMPA TIPO Type	CILINDRATA (cc) Flow	PRESSIONE (bar) Pressure		PESO (Kg) Weight
		Esercizio	Massima	
HP 50	4.3	220	280	3.8
VERSIONE	Model	CODICE Code		
		Senza soffiello Without bellows	Con soffiello With bellows	
Volantino di scarico	Release handknob	HP 50	HP 50S	
Leva di scarico	Release lever	HP 50L	HP 50LS	
Manipolatore di scarico	Release manipulator	HP 50M	HP 50MS	
Senza comando scarico	Without release handknob	HP 50E	HP 50ES	
Valvola di massima pressione	Pressure relief valve	HP 50V	HP 50VS	



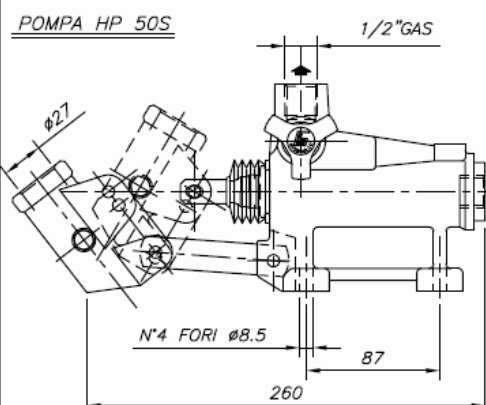
Sforzo con leva 600mm
Working effort with
600mm hand lever

DIAGRAMMA PROVE DI CARICO
Load curve



Pressione (bar)	Pressure (bar)
50	10
100	20
150	30
200	40
250	50
280	80

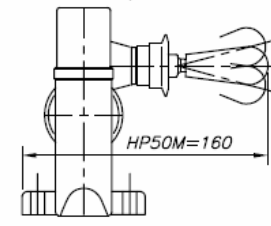
POMPA HP 50S



Volantino di scarico
Release handknob

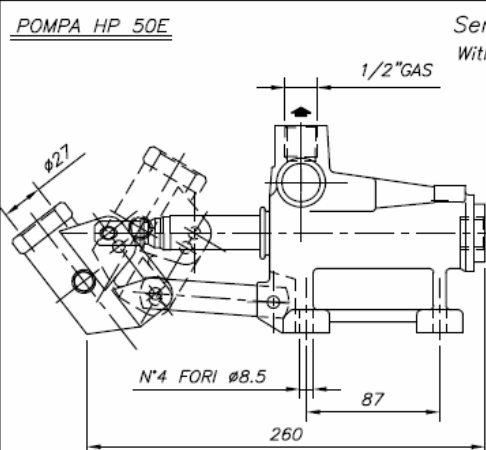
HP50=110

Manipolatore di scarico
Release manipulator



HP50M=160

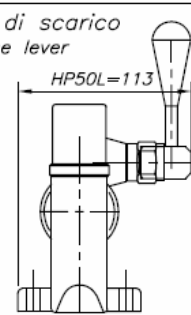
POMPA HP 50E



Senza comando scarico
Without release handknob

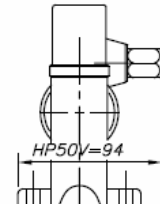
HP50E=70

Leva di scarico
Release lever



HP50L=113

Valvola di massima pressione
(taratura standard 100bar)
Pressure relief valve
(Standard setting 100bar)



HP50V=94

HP 70

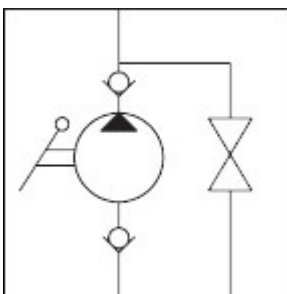


TYPE	FLOW (cc)	PRESSURE (bar)		WEIGHT (Kg)
		Exercise	Max	
HP 70	69	170	220	5.5

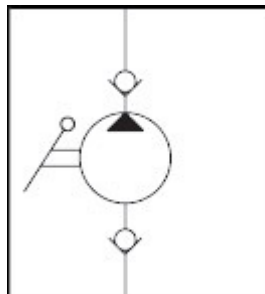
Without bellows	With bellows	MODEL
HP70	HP70S	Release handknob
HP70L	HP70LS	Release lever
HP70M	HP70MS	Release manipulator
HP70E	HP70ES	Without release handknob
HP70V	HP70VS	Pressure relief valve

HYDRAULIC LAYOUTS

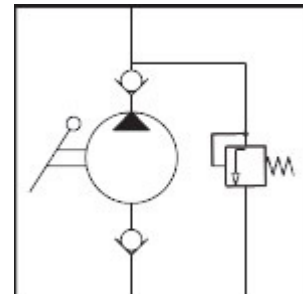
HP70 - HP70L
HP70S - HP70LS



HP70E - HP70ES



HP70V - HP70VS



Hand Pumps HP70

Double acting function for a single acting cylinder Fixing to wall

POMPA TIPO Type	CILINDRATA (cc) Flow	PRESSIONE (bar) Pressure		PESO (Kg) Weight
		Esercizio	Massima	
HP 70	69	170	220	5.5
VERSIONE	Model	CODICE Code		
		Senza soffiello Without bellows	Con soffiello With bellows	
Volantino di scarico	Release handknob	HP 70	HP 70S	
Leva di scarico	Release lever	HP 70L	HP 70LS	
Senza comando scarico	Without release handknob	HP 70E	HP 70ES	
Valvola di massima pressione	Pressure relief valve	HP 70V	HP 70VS	

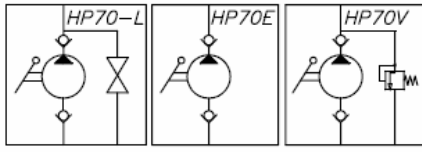
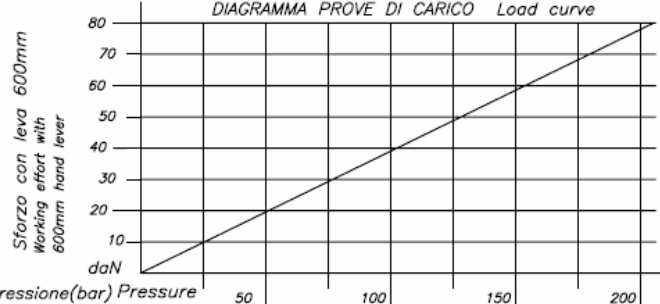
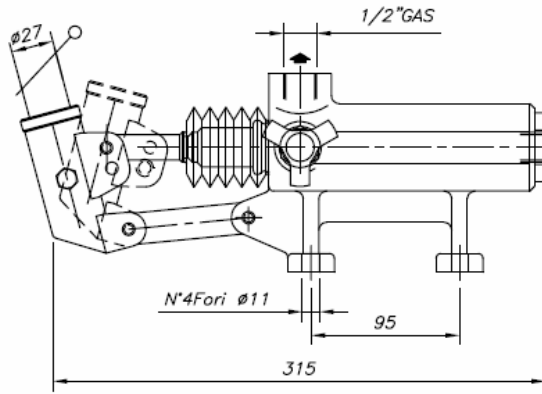
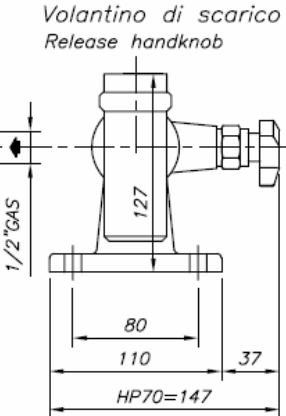
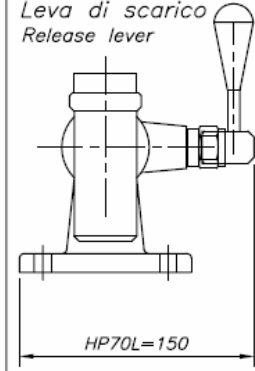
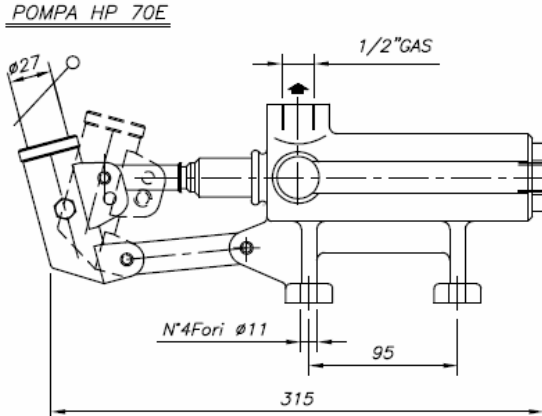
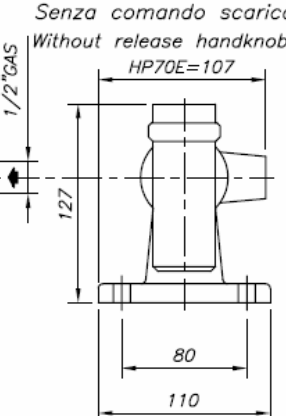
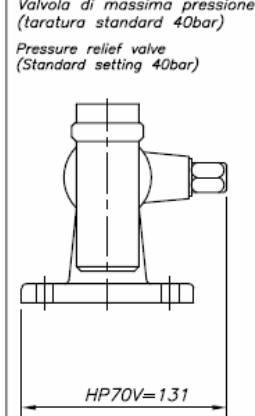


DIAGRAMMA PROVE DI CARICO Load curve



Storzo con leva 600mm
Working effort with
600mm hand lever

Pressione(bar) Pressure 50 100 150 200

POMPA HP 70S	Volantino di scarico Release handknob	Leva di scarico Release lever
		
POMPA HP 70E	Senza comando scarico Without release handknob	Valvola di massima pressione (taratura standard 40bar) Pressure relief valve (Standard setting 40bar)
		

OIL TANKS

PAINTED IRON OIL TANKS FOR HAND PUMPS



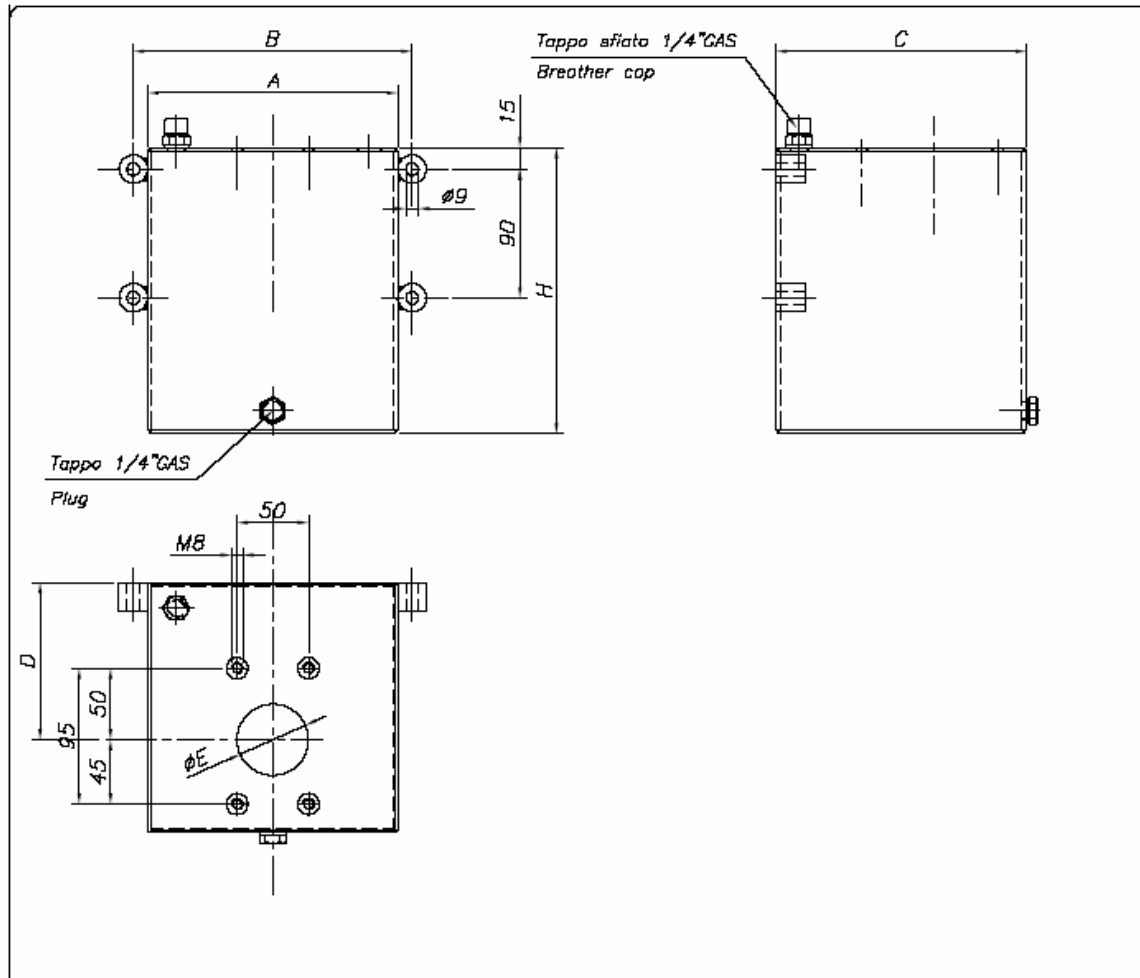
CODE	Tank capacity (litres)	
SR01FE	1	
SR02FE	2	
SR03FE	3	
SR05FE	5	
SR07FE	7	
SR10FE	10	

PAINTED IRON OIL TANKS FOR HAND PUMPS HPT2C



CODE	Tank capacity (litres)	
SR02FE2C	2	
SR03FE2C	3	
SR05FE2C	5	
SR07FE2C	7	
SR10FE2C	10	

Painted iron oil tanks for hand pump



Capacità (litri) Tank capacity	"A" (mm)	"B" (mm)	"C" (mm)	"D" (mm)	"E" (mm)	"H" (mm)	Peso (Kg) Weight	CODICE Code
1	100	120	150	90	50	120	2	SR01FE
2						180	2.2	SR02FE
3						245	2.5	SR03FE
5	175	195	175	110		200	4.5	SR05FE
7						269	5.4	SR07FE
10						376	6.8	SR10FE

SERBATOI PER POMPE SERIE HPT2C
Oil tanks for hand pumps HPT2C

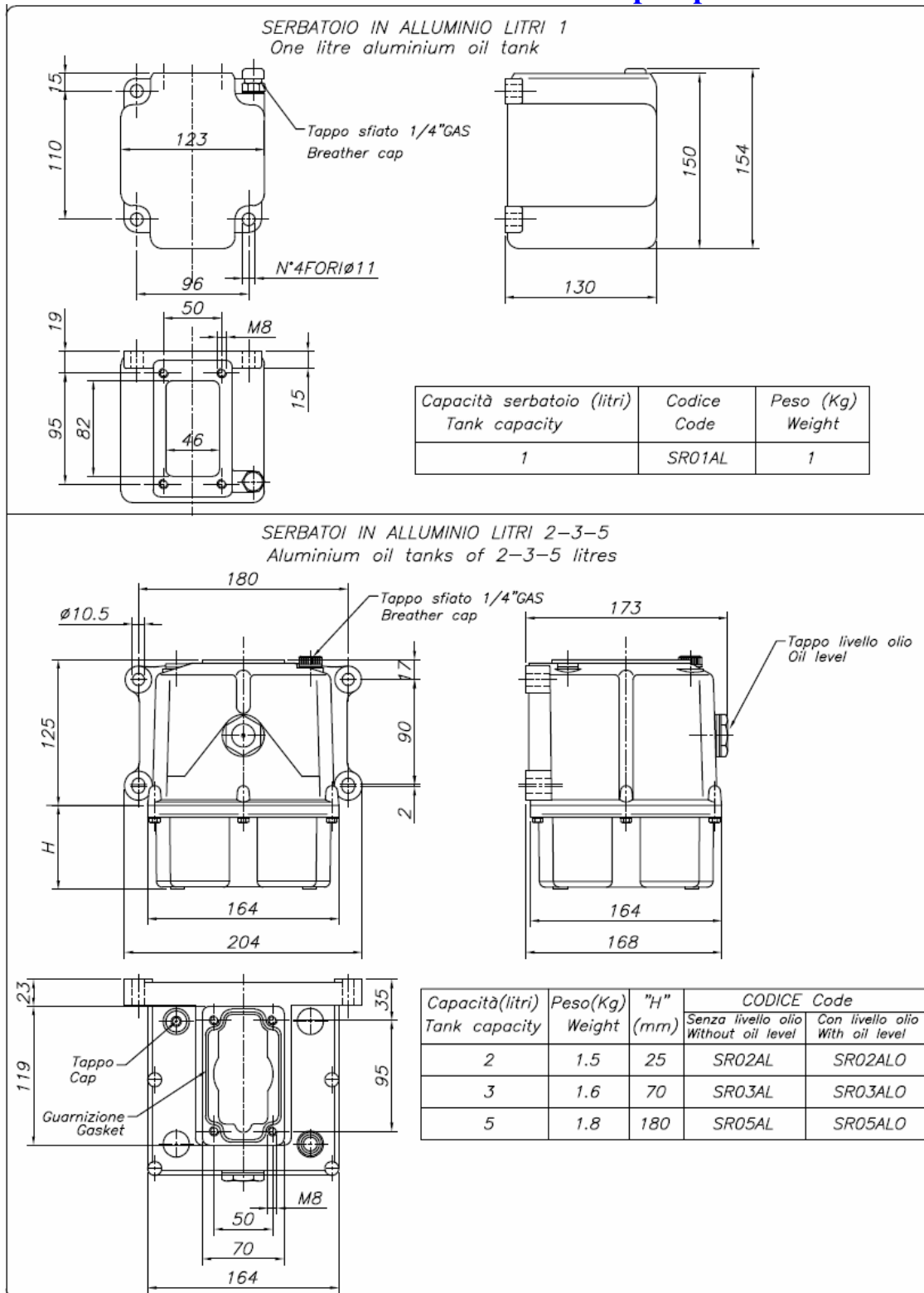
Capacità (litri) Tank capacity	"A" (mm)	"B" (mm)	"C" (mm)	"D" (mm)	"E" (mm)	"H" (mm)	Peso (Kg) Weight	CODICE Code
2	100	120	150	90	68	180	2.2	SR02FE2C
3						245	2.5	SR03FE2C
5						200	4.5	SR05FE2C
7	175	195	175	110		269	5.4	SR07FE2C
10						376	6.8	SR10FE2C

ALUMINIUM OIL TANKS OF 2,3,5 LITRES



CODE				Tank capacity (litres)
Without oil level		With oil level		
SR02AL		SR02AL0		2
SR03AL		SR03AL0		3
SR05AL		SR05AL0		5

Aluminium oil tanks for hand pump



LEVERS



Lever

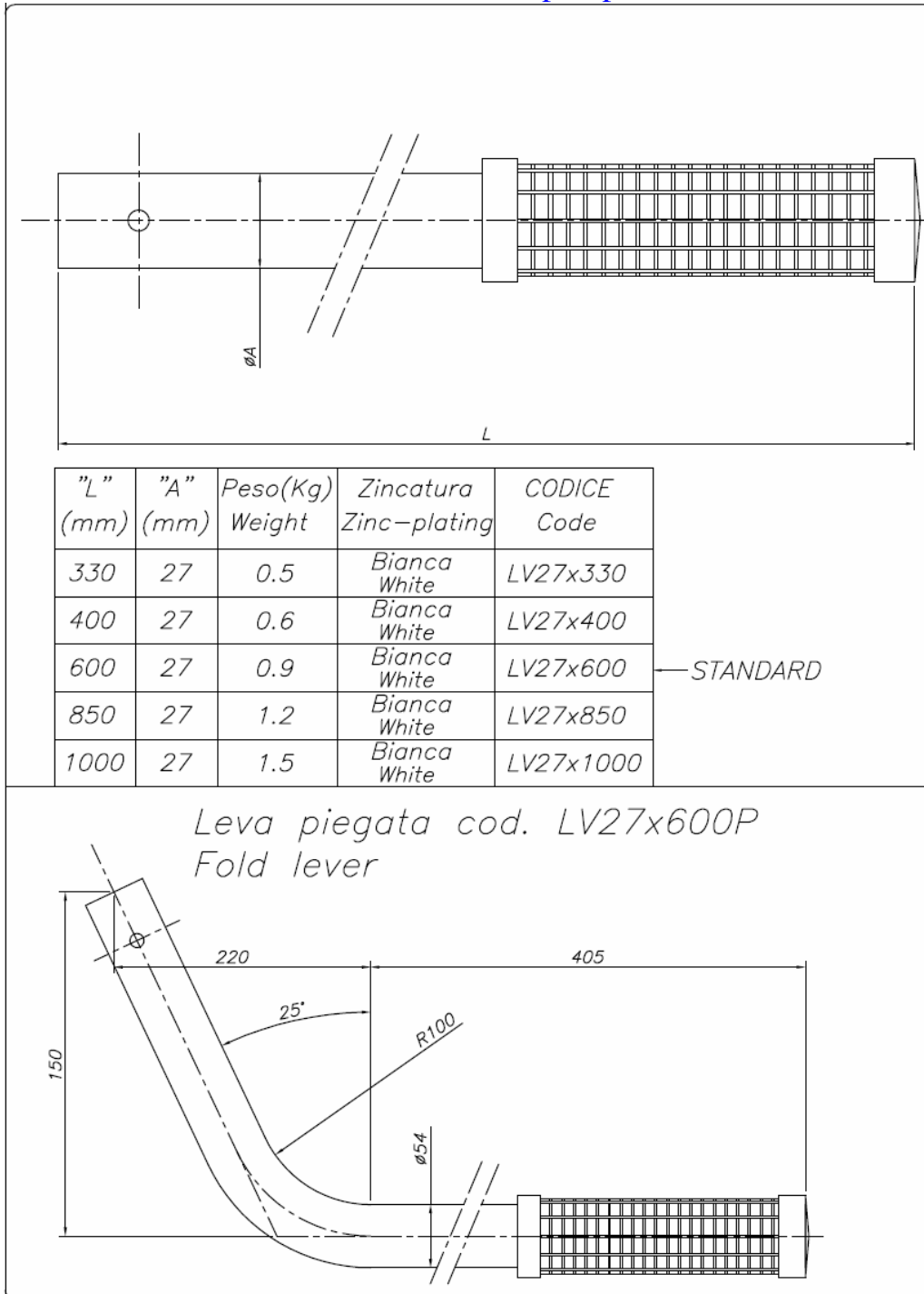


Fold lever

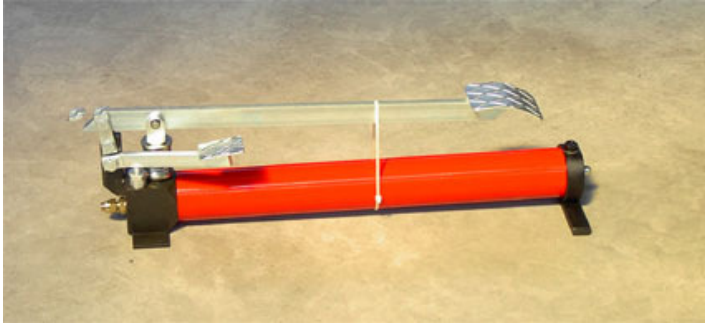
Lever				
CODE	Length (mm)	Diameter (mm)	Weight (Kg)	Zinc-plating
LV27x330	330	27	0.5	white
LV27x400	400	27	0.6	white
LV27x600	600	27	0.9	white
LV27x850	850	27	1.2	white
LV27x1000	1000	27	1.5	white

Fold lever				
CODE	Length (mm)	Diameter (mm)	Weight (Kg)	Zinc-plating
LV27x600P		27	0.9	white

Levers for hand pump

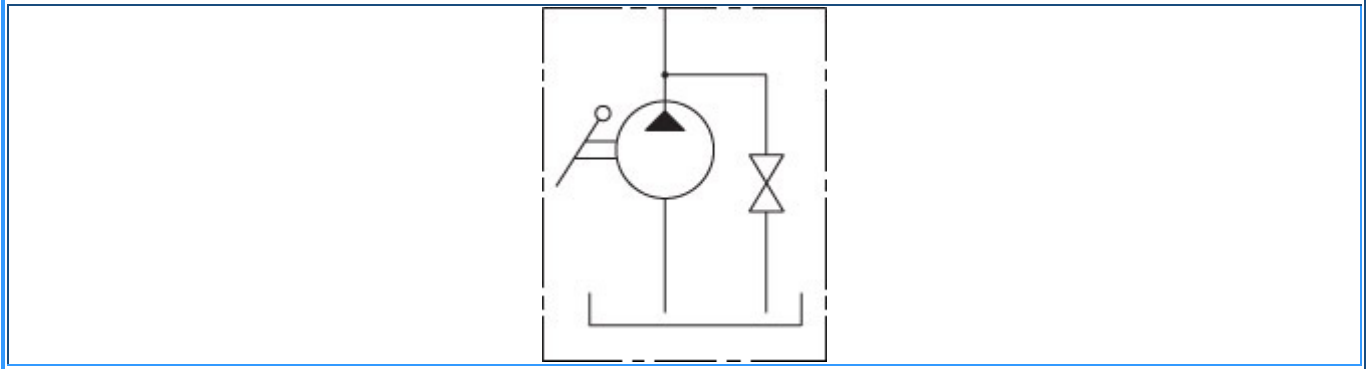


Foot pumps



CODE	FLOW (cc)	PRESSURE (bar)		TANK CAPACITY (litres)	WEIGHT (Kg)
		Exercise	Max		
FPSE20	14	150	200	1.5	11

HYDRAULIC LAYOUT



Foot pumps FPSE Single acting function with cylindrical oil tank

CODICE Code	CILINDRATA (cc) Flow	PRESSIONE (bar) Pressure		Capacità serbatoio (litri) Tank capacity	PESO (Kg) Weight
		Esercizio	Massima		
FPSE20	14	150	200	1.5	11

